

Rac1

Catalog Number: 21003

Gene Symbol: RAC1

Description: Anti-Rac1 Rabbit Polyclonal Antibody

Background: Small GTPases are a super-family of cellular signaling regulators. Rac belongs to the Rho sub-family of GTPases that regulate cell motility, cell division, and gene transcription. GTP binding increases the activity of Rac, and the hydrolysis of GTP to GDP renders it inactive. GTP hydrolysis is aided by GTPase activating proteins (GAPs), while exchange of GDP for GTP is facilitated by guanine nucleotide exchange factors (GEFs).

Immunogen: A synthetic peptide from a unique region of Rac1

Tested applications: ELISA, WB, IHC

Recommended dilutions:

ELISA 1:100-1:5000

WB 1:100-1:2000

Concentration: 1 mg/ml

Host: Rabbit

Clonality: Polyclonal

Purity: Purified from serum

Format: Liquid

Storage buffer:

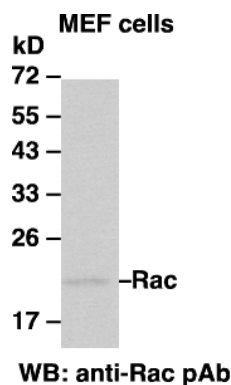
Preservative: no

Constituents: PBS (without Mg^{2+} and Ca^{2+}), pH 7.4, 150 mM NaCl, 50% glycerol

Species Reactivity: Rac1 antibody recognizes Rac1 from vertebrates.

Storage Conditions: Store at $-20^{\circ}C$. Avoid freeze / thaw cycles

Western blot:



Western blot analysis of Rac1 proteins. MEF whole-cell lysate was used for western blots with the polyclonal anti-Rac1 antibody (cat # 21003).